

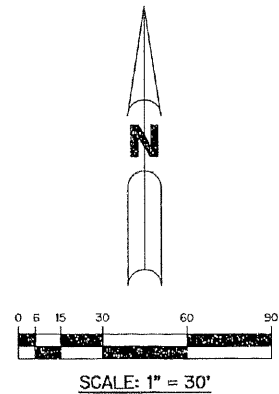
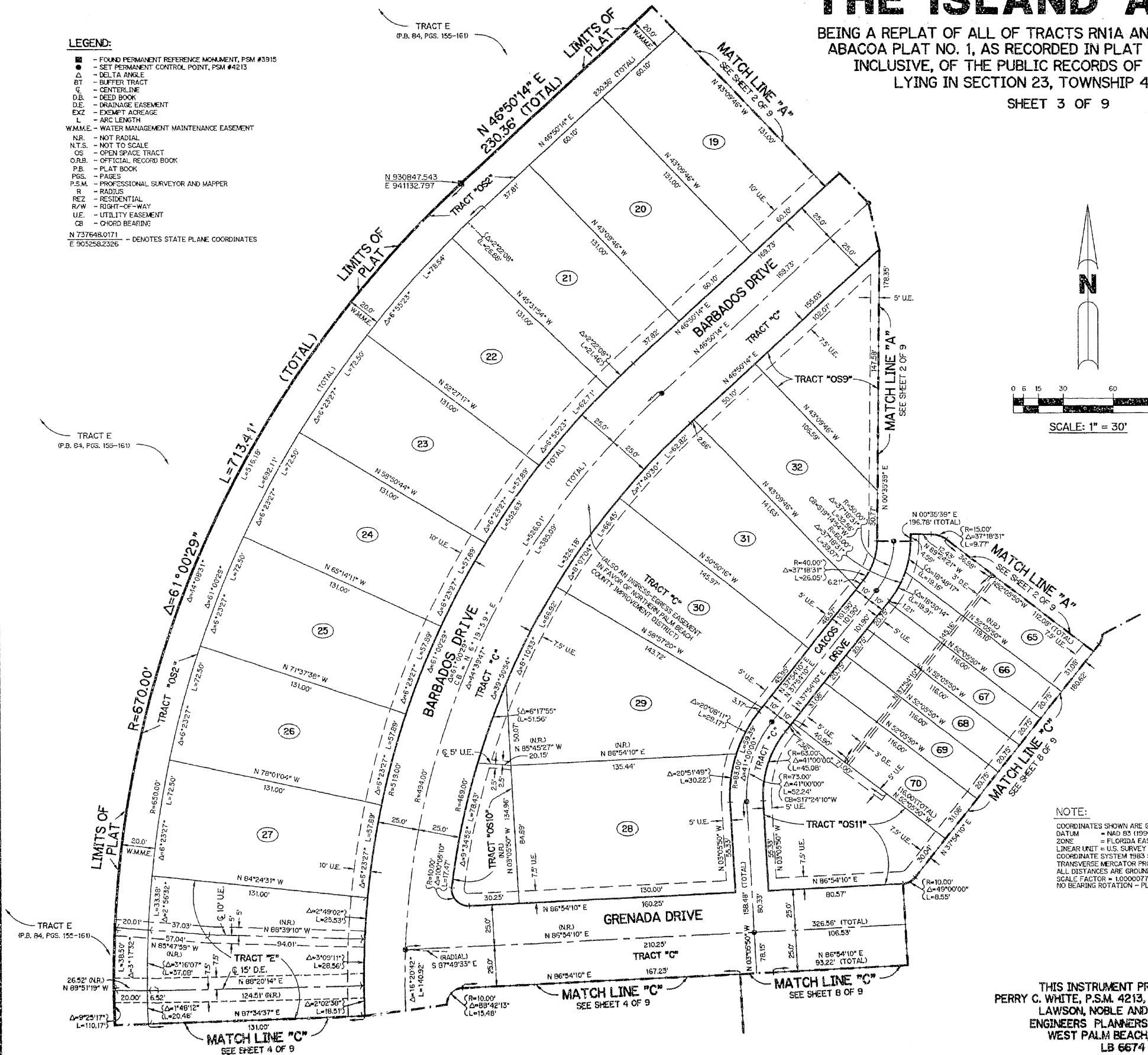
# THE ISLAND AT ABACOA

BEING A REPLAT OF ALL OF TRACTS RN1A AND RN1B ACCORDING TO THE PLAT OF ABACOA PLAT NO. 1, AS RECORDED IN PLAT BOOK 78, PAGES 145 THROUGH 163, INCLUSIVE, OF THE PUBLIC RECORDS OF PALM BEACH COUNTY, FLORIDA. LYING IN SECTION 23, TOWNSHIP 41 SOUTH, RANGE 42 EAST.

SHEET 3 OF 9 MAY, 1999

### LEGEND:

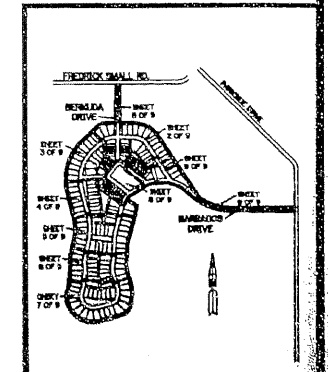
- - FOUND PERMANENT REFERENCE MONUMENT, PSM #3315
  - - SET PERMANENT CONTROL POINT, PSM #4213
  - △ - DELTA ANGLE
  - BT - BUFFER TRACT
  - CL - CENTERLINE
  - D.B. - DEED BOOK
  - D.E. - DRAINAGE EASEMENT
  - EXZ - EXEMPT ACREAGE
  - L - ARC LENGTH
  - WM.M.E. - WATER MANAGEMENT MAINTENANCE EASEMENT
  - NR - NOT RADIAL
  - N.T.S. - NOT TO SCALE
  - OS - OPEN SPACE TRACT
  - O.R.B. - OFFICIAL RECORD BOOK
  - P.B. - PLAT BOOK
  - P.G.S. - PAGES
  - P.S.M. - PROFESSIONAL SURVEYOR AND MAPPER
  - R - RADIUS
  - REZ - RESIDENTIAL
  - R/W - RIGHT-OF-WAY
  - U.E. - UTILITY EASEMENT
  - CB - CHORD BEARING
- N 737648.0171  
E 905258.2326 - DENOTES STATE PLANE COORDINATES



TRACT	ACREAGE	LAND USE	TRACT	ACREAGE	LAND USE	TRACT	ACREAGE	LAND USE
LOT 1	0.196 AC.	REZ	LOT 72	0.055 AC.	REZ	LOT 143	0.149 AC.	REZ
LOT 2	0.181 AC.	REZ	LOT 73	0.055 AC.	REZ	LOT 144	0.119 AC.	REZ
LOT 3	0.181 AC.	REZ	LOT 74	0.055 AC.	REZ	LOT 145	0.149 AC.	REZ
LOT 4	0.181 AC.	REZ	LOT 75	0.055 AC.	REZ	LOT 146	0.149 AC.	REZ
LOT 5	0.181 AC.	REZ	LOT 76	0.084 AC.	REZ	LOT 147	0.119 AC.	REZ
LOT 6	0.181 AC.	REZ	LOT 77	0.054 AC.	REZ	LOT 148	0.149 AC.	REZ
LOT 7	0.181 AC.	REZ	LOT 78	0.055 AC.	REZ	LOT 149	0.122 AC.	REZ
LOT 8	0.181 AC.	REZ	LOT 79	0.055 AC.	REZ	LOT 150	0.187 AC.	REZ
LOT 9	0.181 AC.	REZ	LOT 80	0.055 AC.	REZ	LOT 151	0.181 AC.	REZ
LOT 10	0.236 AC.	REZ	LOT 81	0.055 AC.	REZ	LOT 152	0.161 AC.	REZ
LOT 11	0.215 AC.	REZ	LOT 82	0.084 AC.	REZ	LOT 153	0.161 AC.	REZ
LOT 12	0.215 AC.	REZ	LOT 83	0.196 AC.	REZ	LOT 154	0.129 AC.	REZ
LOT 13	0.209 AC.	REZ	LOT 84	0.194 AC.	REZ	LOT 155	0.221 AC.	REZ
LOT 14	0.181 AC.	REZ	LOT 85	0.181 AC.	REZ	LOT 156	0.169 AC.	REZ
LOT 15	0.196 AC.	REZ	LOT 86	0.196 AC.	REZ	LOT 157	0.174 AC.	REZ
LOT 16	0.241 AC.	REZ	LOT 87	0.181 AC.	REZ	LOT 158	0.155 AC.	REZ
LOT 17	0.241 AC.	REZ	LOT 88	0.196 AC.	REZ	LOT 159	0.161 AC.	REZ
LOT 18	0.218 AC.	REZ	LOT 89	0.181 AC.	REZ	LOT 160	0.163 AC.	REZ
LOT 19	0.181 AC.	REZ	LOT 90	0.205 AC.	REZ	LOT 161	0.172 AC.	REZ
LOT 20	0.181 AC.	REZ	LOT 91	0.201 AC.	REZ	LOT 162	0.240 AC.	REZ
LOT 21	0.186 AC.	REZ	LOT 92	0.217 AC.	REZ	LOT 163	0.174 AC.	REZ
LOT 22	0.212 AC.	REZ	LOT 93	0.196 AC.	REZ	LOT 164	0.149 AC.	REZ
LOT 23	0.196 AC.	REZ	LOT 94	0.191 AC.	REZ	LOT 165	0.163 AC.	REZ
LOT 24	0.196 AC.	REZ	LOT 95	0.196 AC.	REZ	LOT 166	0.130 AC.	REZ
LOT 25	0.196 AC.	REZ	LOT 96	0.201 AC.	REZ	LOT 167	0.163 AC.	REZ
LOT 26	0.196 AC.	REZ	LOT 97	0.196 AC.	REZ	LOT 168	0.163 AC.	REZ
LOT 27	0.196 AC.	REZ	LOT 98	0.196 AC.	REZ	LOT 169	0.197 AC.	REZ
LOT 28	0.255 AC.	REZ	LOT 99	0.194 AC.	REZ	LOT 170	0.222 AC.	REZ
LOT 29	0.241 AC.	REZ	LOT 100	0.210 AC.	REZ	LOT 171	0.172 AC.	REZ
LOT 30	0.187 AC.	REZ	LOT 101	0.194 AC.	REZ	LOT 172	0.186 AC.	REZ
LOT 31	0.168 AC.	REZ	LOT 102	0.196 AC.	REZ	LOT 173	0.140 AC.	REZ
LOT 32	0.148 AC.	REZ	LOT 103	0.244 AC.	REZ	LOT 174	0.168 AC.	REZ
LOT 33	0.353 AC.	REZ	LOT 104	0.244 AC.	REZ	LOT 175	0.152 AC.	REZ
LOT 34	0.193 AC.	REZ	LOT 105	0.225 AC.	REZ	LOT 176	0.239 AC.	REZ
LOT 35	0.120 AC.	REZ	LOT 106	0.225 AC.	REZ	TOTAL	26.116 AC.	REZ
LOT 36	0.150 AC.	REZ	LOT 107	0.225 AC.	REZ	OS1	0.639 AC.	EXZ
LOT 37	0.150 AC.	REZ	LOT 108	0.232 AC.	REZ	OS2	2.108 AC.	EXZ
LOT 38	0.141 AC.	REZ	LOT 109	0.181 AC.	REZ	OS3	0.064 AC.	EXZ
LOT 39	0.365 AC.	REZ	LOT 110	0.181 AC.	REZ	OS4	0.031 AC.	EXZ
LOT 40	0.150 AC.	REZ	LOT 111	0.181 AC.	REZ	OS5	0.196 AC.	EXZ
LOT 41	0.098 AC.	REZ	LOT 112	0.232 AC.	REZ	OS6	0.144 AC.	EXZ
LOT 42	0.060 AC.	REZ	LOT 113	0.204 AC.	REZ	OS7	0.139 AC.	EXZ
LOT 43	0.055 AC.	REZ	LOT 114	0.237 AC.	REZ	OS8	0.170 AC.	EXZ
LOT 44	0.055 AC.	REZ	LOT 115	0.209 AC.	REZ	OS9	0.125 AC.	EXZ
LOT 45	0.055 AC.	REZ	LOT 116	0.181 AC.	REZ	OS10	0.076 AC.	EXZ
LOT 46	0.084 AC.	REZ	LOT 117	0.181 AC.	REZ	OS11	0.163 AC.	EXZ
LOT 47	0.084 AC.	REZ	LOT 118	0.232 AC.	REZ	OS12	0.102 AC.	EXZ
LOT 48	0.055 AC.	REZ	LOT 119	0.195 AC.	REZ	OS13	0.029 AC.	EXZ
LOT 49	0.055 AC.	REZ	LOT 120	0.181 AC.	REZ	OS14	0.069 AC.	EXZ
LOT 50	0.055 AC.	REZ	LOT 121	0.191 AC.	REZ	OS15	0.166 AC.	EXZ
LOT 51	0.055 AC.	REZ	LOT 122	0.184 AC.	REZ	OS16	0.061 AC.	EXZ
LOT 52	0.084 AC.	REZ	LOT 123	0.199 AC.	REZ	OS17	0.333 AC.	EXZ
LOT 53	0.084 AC.	REZ	LOT 124	0.188 AC.	REZ	OS18	0.286 AC.	EXZ
LOT 54	0.055 AC.	REZ	LOT 125	0.201 AC.	REZ	OS19	0.048 AC.	EXZ
LOT 55	0.055 AC.	REZ	LOT 126	0.204 AC.	REZ	TOTAL	4.945 AC.	EXZ
LOT 56	0.055 AC.	REZ	LOT 127	0.205 AC.	REZ	TRACT A*	4.230 AC.	EXZ
LOT 57	0.055 AC.	REZ	LOT 128	0.206 AC.	REZ	TRACT B*	1.363 AC.	EXZ
LOT 58	0.084 AC.	REZ	LOT 129	0.275 AC.	REZ	TRACT C*	6.146 AC.	EXZ
LOT 59	0.084 AC.	REZ	LOT 130	0.255 AC.	REZ	TRACT D*	0.106 AC.	EXZ
LOT 60	0.055 AC.	REZ	LOT 131	0.180 AC.	REZ	TRACT E*	0.246 AC.	EXZ
LOT 61	0.055 AC.	REZ	LOT 132	0.150 AC.	REZ	TRACT F*	1.339 AC.	EXZ
LOT 62	0.055 AC.	REZ	LOT 133	0.150 AC.	REZ	TRACT G*	0.478 AC.	EXZ
LOT 63	0.055 AC.	REZ	LOT 134	0.208 AC.	REZ	TRACT H*	0.206 AC.	EXZ
LOT 64	0.084 AC.	REZ	LOT 135	0.215 AC.	REZ	TRACT I*	0.344 AC.	EXZ
LOT 65	0.050 AC.	REZ	LOT 136	0.129 AC.	REZ	TRACT J*	0.254 AC.	EXZ
LOT 66	0.055 AC.	REZ	LOT 137	0.161 AC.	REZ	TRACT K*	0.130 AC.	EXZ
LOT 67	0.055 AC.	REZ	LOT 138	0.161 AC.	REZ	TRACT L*	0.465 AC.	EXZ
LOT 68	0.055 AC.	REZ	LOT 139	0.173 AC.	REZ	TRACT M*	0.235 AC.	EXZ
LOT 69	0.055 AC.	REZ	LOT 140	0.161 AC.	REZ	TOTAL	15.542 AC.	EXZ
LOT 70	0.084 AC.	REZ	LOT 141	0.119 AC.	REZ	PLAT TOTAL	48.603 AC.	
LOT 71	0.084 AC.	REZ	LOT 142	0.149 AC.	REZ			

NOTE:  
 COORDINATES SHOWN ARE GRID COORDINATES  
 DATUM = NAD 83 (1990 ADJUSTMENT)  
 ZONE = FLORIDA EAST ZONE  
 LINEAR UNIT = U.S. SURVEY FEET  
 COORDINATE SYSTEM 1983 STATE PLANE  
 TRANSVERSE MERCATOR PROJECTION  
 ALL DISTANCES ARE GROUND  
 SCALE FACTOR = 1.0000077  
 NO BEARING ROTATION - PLAT - GRID

KEY MAP  
 N.T.S.



THIS INSTRUMENT PREPARED BY  
 PERRY C. WHITE, P.S.M. 4213, STATE OF FLORIDA  
 LAWSON, NOBLE AND WEBB, INC.  
 ENGINEERS PLANNERS SURVEYORS  
 WEST PALM BEACH, FLORIDA  
 LB 6674